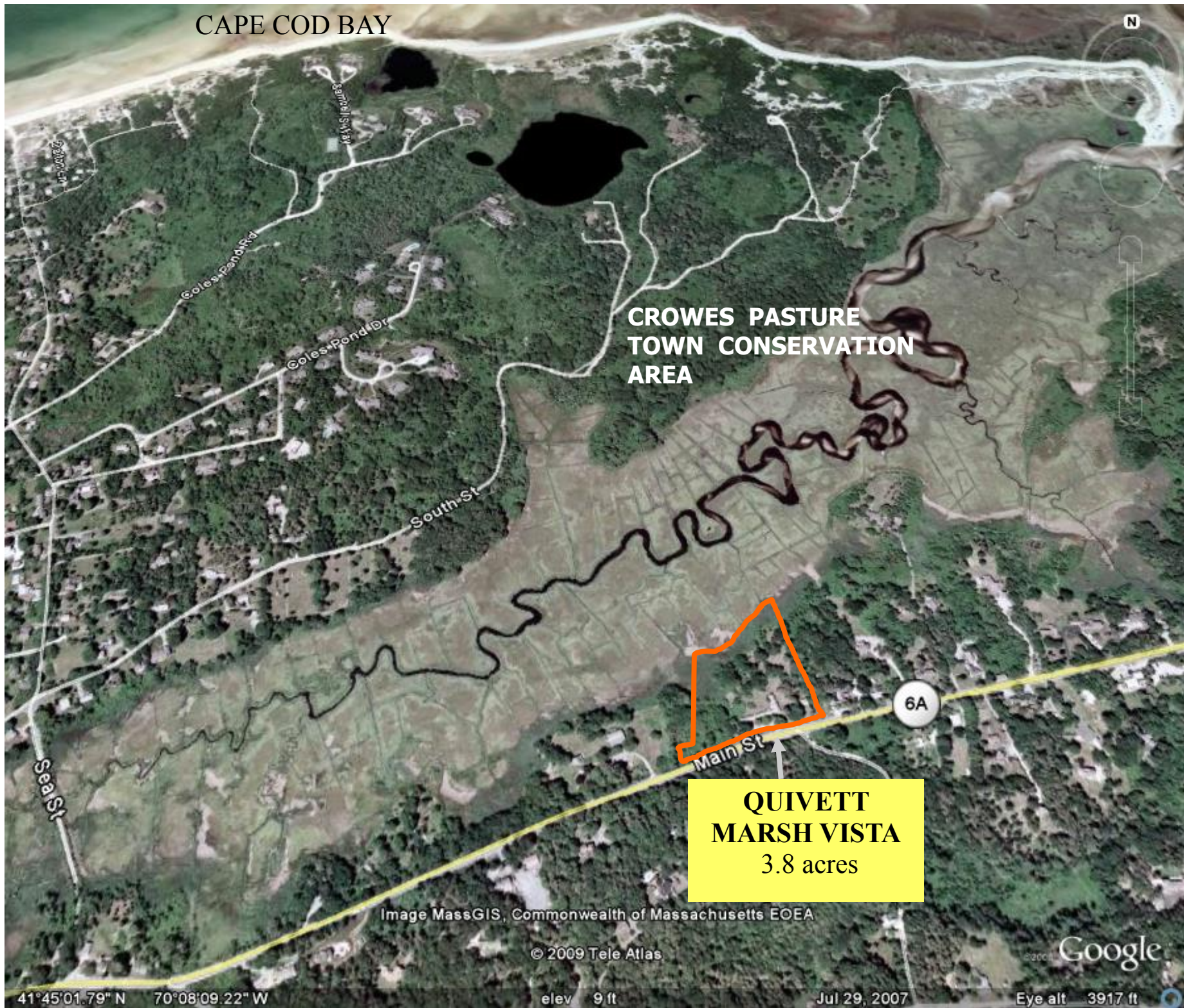


# CAPE COD BAY



**CROWES PASTURE  
TOWN CONSERVATION  
AREA**

**QUIVETT  
MARSH VISTA**  
3.8 acres

Image MassGIS, Commonwealth of Massachusetts EOE

© 2009 Tele Atlas

Google

41°45'01.79" N 70°08'09.22" W

elev 9 ft

Jul 29, 2007

Eye alt 3917 ft